

Model DDF

10 TO 14-INCH DESTRATIFICATION FANS



Elevated Engineering™

Heat loss through the roof of your building is one of the primary reasons for high energy costs during heating season. Model DDF destratification fans are specifically designed to combat this problem by driving warm air near the ceiling of a building down to occupant level to conserve heat and improve comfort. With their powerful directional airflow, model DDF fans can destratify buildings with ceilings up to 65 feet, taking energy savings to new heights.

DIAMETER

- Propeller diameters between 10-14 inches

PERFORMANCE

- Airflow range up to 1500 cfm
- Ceiling height up to 65 feet

MOTOR & VOLTAGE

- 1/15 hp - 1/4 hp, direct drive Vari-Green® motors
- 115-277V/1-phase

MOUNTING OPTIONS

- Universal mounting to any ceiling structure using steel hanging cable with Gripple® hardware

WARRANTY

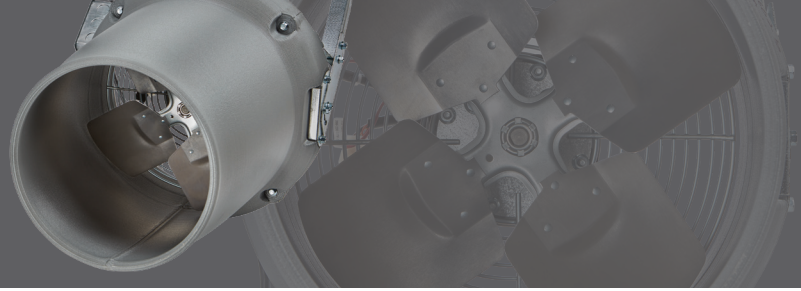
- 3-year mechanical
- 3-year electrical

PRIMARY APPLICATIONS

Warehouses | Distribution Centers | Manufacturing Facilities | Automotive Garages or Dealerships
Police and Fire Stations | Fitness Centers | Military Facilities | Public Works Facilities
Aviation Facilities and Airports | Stadiums and Arenas | Education Facilities

Model DDF

10 TO 14-INCH DESTRATIFICATION FANS



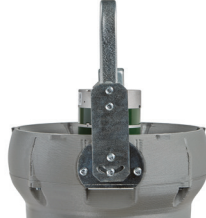
STANDARD FEATURES

PLUG-AND-PLAY WIRING



Fans include a factory-installed 10' power wiring pigtail with plug for fast and easy installation in any building.

UNIVERSAL CEILING MOUNT



Designed to mount to any ceiling structure using the supplied steel mounting cable and Grippler® hanging hardware. Yoke mounting bracket allows for field-adjustment of hanging angle up to 45°.

VARI-GREEN® DIRECT DRIVE MOTOR



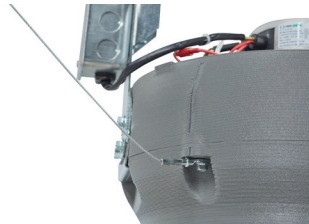
Electronically commutated (EC) Vari-Green motors provide advanced motor protection, controllability, and energy efficiency in a single low-maintenance package. Motors are factory-wired for 115V/1 operation, but can be adjusted for 208-230V/1 or 277V/1 operation in the field.

3D PRINTED HOUSING



Unique 3D printed housing is aerodynamically optimized for maximum airflow, throw distance, and coverage area. Steel-reinforced, co-polymer composite material reduces overall fan weight without sacrificing strength or longevity.

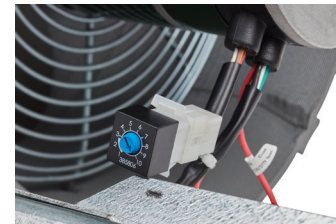
ADVANCED SAFETY FEATURES



Mechanical and electrical safety systems ensure worry-free operation for years to come. Key safety features include:

- Safety restraint cable for redundant connection to building structure
- Factory-installed intake guard to prevent unsafe contact with fan propeller
- Vari-Green motor technology with soft start feature, overload protection, thermal protection, and locked rotor protection

CONTROLLABILITY



Vari-Green motors provide industry-leading speed controllability with up to 80% usable turndown. Fans can be paired with an assortment of Vari-Green controls or operated remotely via 0-10VDC control signal.

PERFORMANCE DATA

FAN SIZE (in)	MAX AIRFLOW (CFM)	MAX RPM	MOTOR SIZE (HP)	WEIGHT* (lbs)
10	640	1725	1/15	16
12	910	1725	1/4	22
14	1500	1725	1/4	27

*Weight does not include accessories or optional features.

[greenheck.com](https://www.greenheck.com)

P.O. Box 410 | Schofield, WI 54476 | 715-359-6171 00.F&V.NB026 R1 2-2023 © 2023 Greenheck Fan Corp.

 **GREENHECK**
Building Value in Air.